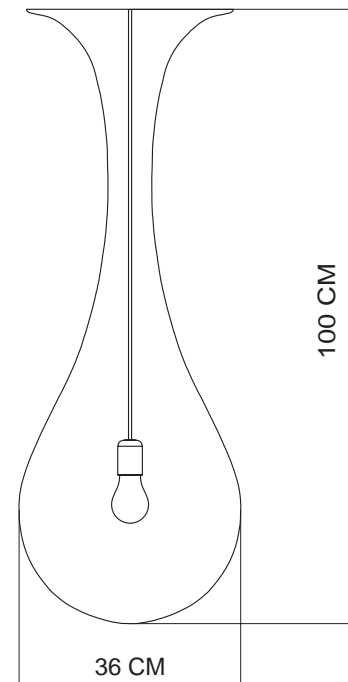


LIQUID_LIGHT DROP_1

DESIGN BY HOPF & WORTMANN BÜRO FÜR FORM.



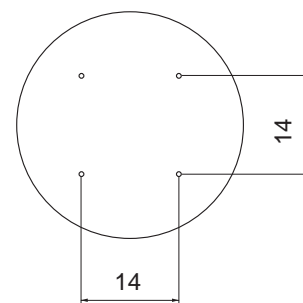
GRÖSSEN / DIMENSIONS:



PRODUKTBESCHREIBUNG / PRODUCT SPECIFICATIONS:

MATERIAL: PE
FARBE / COLOUR: WEISS / WHITE
BIRNE / LAMP: E 27, MAX. 100 W
SONSTIGES / OTHER: EINFACHE INSTALLATION MITTELS BAJONETTVERSCHLUSS. KABELAUSGÄNGE FÜR REIHENSCHALTUNG / EASY INSTALLATION WITH BAYONETT JOINT. CABLE OUTLET FOR SERIAL CONNECTION.

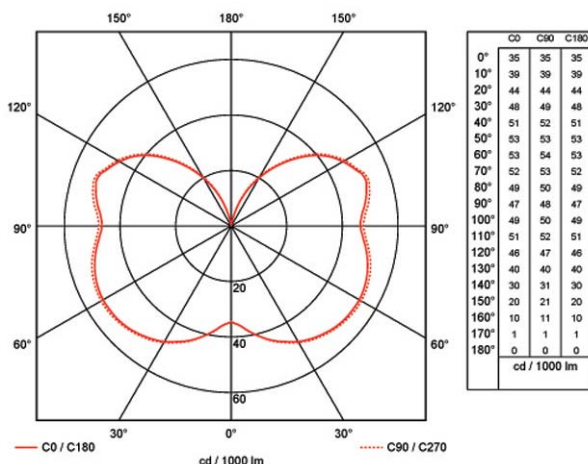
DECKENHALTERUNG / CEILING PLATE: BOHRLÖCHER / DRILLING HOLES: 6 mm



TECHNISCHE ANGABEN / TECHNICAL SPECIFICATIONS:



LICHTVERTEILUNGSKURVE/ LUMINOUS DISTRIBUTION CURVE :



VERPACKUNGSANGABEN / PACKAGING DETAILS:

GRÖSSE / SIZE: 40 x 40 x 110 CM
GEWICHT / WEIGHT: 5,6 KG (1 PER CARTON)

EUROPALETTE / EURO PALLET: 15 STK / 15 PCS
(110 x 120 X 215 CM)